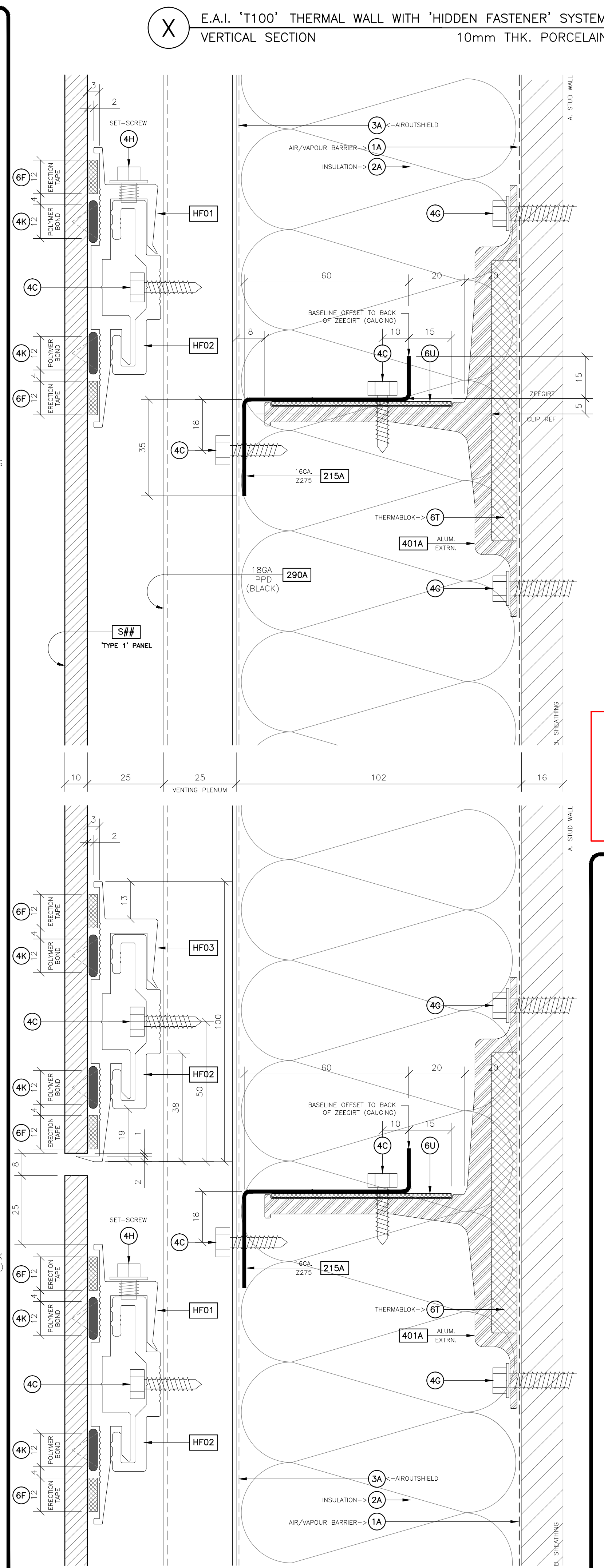
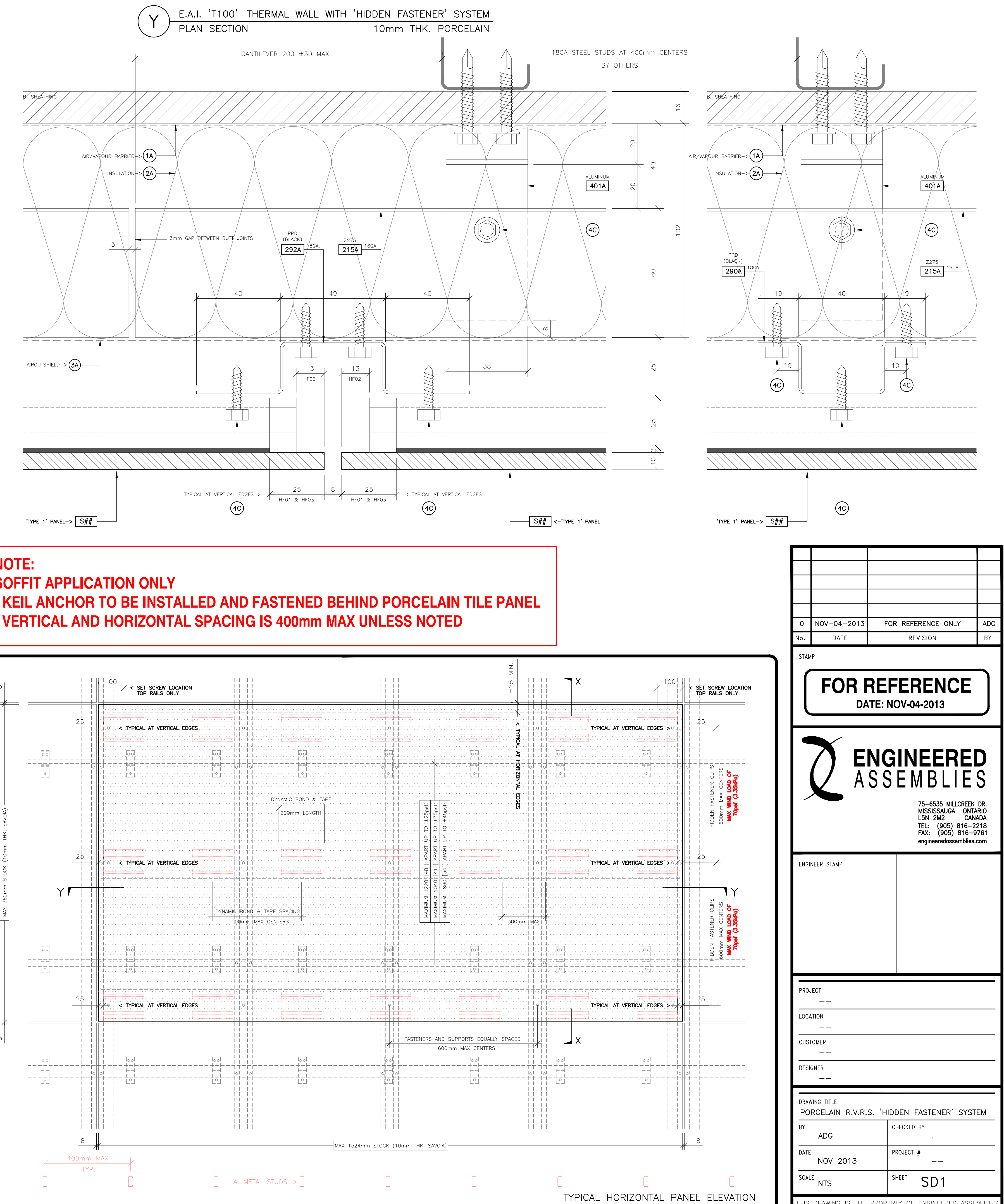


PORCELAIN 'HIDDEN FASTENER' WALL SYSTEM GENERAL NOTES

- A. STUD WALL: 16mm INTERIOR GYPROC FINISH ON GALVANIZED STEEL STUDS AT 400 CENTERS.
  - DESIGN OF SUBGIRTS ASSUMES 18GA STUDS (CSSE) 0.043" MIN STEEL THICKNESS SPACED AT 400 [15 3/4"] MAXIMUM HARD METRIC CENTERS
- B. SHEATHING: 16mm [5/8"] 'DENSGLASS' FIBERGLASS FACED, TYPE X GYPSUM/CELLULOSE EXTERIOR SHEATHING BY GEORGIA PACIFIC
  - FASTEN WITH SCREWS (HEADS TO BE FLUSH OR SLIGHTLY COUNTERSUNK)
  - ALL FASTENING OF SHEATHING STUDS AND TRACKS SHALL NOT INTERFERE WITH SUBSEQUENT FLUSH MOUNTING OF PANEL SUBGIRT SYSTEM
- C. A/V BARRIER: 1A 1mm x 914 [36"] 'BLUESKIN SA' SELF-ADHESIVE AIR/VAPOUR BARRIER MEMBRANE BY BAKOR (SUPPLIED IN 22.9m [75'] ROLLS)
  - LOW TEMPERATURE INSTALLATION (BELOW +5°C) ALTERNATIVE IS 'BLUESKIN SA LT'
  - SHEATHING MUST BE CLEAN OF DUST AND DRY BEFORE APPLYING MEMBRANE
  - CONCRETE MUST BE CURED, SMOOTH, WITHOUT LARGE VOIDS (AND DRY) CONCRETE BLOCK JOINTS MUST BE STRUCK FLUSH
  - PRIME ALL SURFACES WITH ROLLER-APPLIED BLUE 'BLUESKIN PRIMER'
    - SHEATHING COVERAGE IS 5sq.m OF WALL AREA PER LITER [250sq.ft PER GAL]
    - CONCRETE COVERAGE IS 2sq.m OF WALL AREA PER LITER [100sq.ft PER GAL]
  - ALLOW PRIMER TO CURE (DRY) BEFORE APPLYING MEMBRANE (IF MEMBRANE CANNOT BE APPLIED DURING THE SAME DAY, RE-PRIME THE SURFACE)
  - PEEL 50mm [2"] FROM BLUESKIN EDGE AND ALIGN MEMBRANE PERIMETERS WITH ADJACENT MEMBRANES (OVERLAP 50mm MINIMUM AT SIDE AND END LAPS)
  - WHEN MEMBRANE IS ENTIRELY IN PLACE, ROLL LAPS AND INTERIOR WITH A COUNTER-TOP ROLLER TO ENSURE FULL CONTACT
  - SEAL ALL MEMBRANE PENETRATIONS WITH MASTIC
  - SEAL TOP EDGE OF MEMBRANE TO SUBSTRATE AT END OF EACH DAYS WORK
  - COORDINATE MEMBRANE INSTALLATION AND PANEL INSULATION TO AVOID EXTENDED EXPOSURE OF MEMBRANE TO WEATHER
  - FIELD COORDINATE WITH ADJACENT A/V MEMBRANE APPLIED BY OTHER TRADES TO ENSURE CONTINUITY OF AIR/VAPOUR BARRIER AT PERIMETERS (SEE DETAILS)
- D. INSULATION: 2A MINIMUM 102mm [4"] 'ROXULPLUS' SEMI-RIGID MINERAL WOOL BOARD BY ROXUL PRECUT BATTS TO SUIT STANDARD HATBAR MODULE, 620v x 1220H [24" x 48" TYP]
  - APPLY 6mmφ [1/4"] BEAD OF TYPE 6A MASTIC IN SERPENTINE PATTERN AT 3 sq.m. PER LITER [150 sq.ft. PER GAL]
  - BATTS ARE COMPRESSION-FIT BEHIND VERTICAL HATBARS AT JOINTS & CENTERLINES
- E. WEATHER BARRIER: 3A 'AIROUTSHIELD' BREATHABLE 2 PLY BONDED POLYESTER WEATHER BARRIER FABRIC BY SRP CANADA, ROLL SIZE 1500 x50m [59' x165'] (BLACK ON EXPOSED SIDE)
  - INSTALL BLACK-SIDE-OUT TO FORM A WATER/AIR BARRIER BEHIND THE PLENUM. APPLY TO THE EXTERIOR SUBGIRT FACE WITH 2 SIDED TAPE
  - SHINGLE HORIZONTAL AND VERTICAL LAPS APPROX 150mm [6"] TO THROW WATER AND SEAL LAPS AND PERIMETERS WITH CONTINUOUS TAPE
- F. TRIM: 1## FABRICATED FROM 0.65mm [0.026"] 24GA BAYCOAT 8000+ SERIES PPD STEEL STANDARD COLOR (BLACK) WITH STANDARD WASHCOAT ON REVERSE SURFACE
  - TRIM SUPPLIED ADJACENT TO PANELS ONLY WHERE SHOWN IN THESE DETAILS
  - FASTEN WITH STAINLESS STEEL RIVETS AT 600 [24"] CENTERS
  - 18GA Z275 GRADE GALVANIZED STEEL PPD BOTH SIDES WITH 'PERSPECTRA SERIES' OC18262 BLACK (WHERE PROPOSED/INDICATED ON DETAILS ONLY)
- G. SUBGIRTS: 2## FABRICATED FROM MIN 1.26mm [0.050"] 18GA Z275 GRADE GALVANIZED STEEL (PLENUM SUBGIRTS PPD BOTH SIDES WITH 'PERSPECTRA SERIES' OC18262 BLACK)
  - FASTEN MULTI-SPAN HORIZONTAL SUBGIRTS TO EVERY STUD WITH HEX SCREWS AT 1 SCREW PER FLANGE PER STUD UNLESS NOTED OTHERWISE. UNDERDRILL WITH #20 BIT TO MAXIMIZE PULLOUT FROM SHEATHED 18GA STUDS
  - FASTEN MULTI-SPAN VERTICAL PLENUM HATBARS TO EACH HORIZONTAL SUBGIRT WITH SELF-DRILLING TEKS THROUGH WEATHER BARRIER
- H. VENT SCREEN: 3## FABRICATED FROM 4'x10' 0.040" PERFORATED ALUMINUM SHEET PREPAINED BLACK (3/16" PERFORATIONS AT 1/4" STAGGERED CENTERS FOR 50% NET FREE AREA)
  - USED AT BASE AND HEAD DETAILS TO PREVENT RODENT/BIRD ENTRY INTO PLENUM
- J. THERMAL CLIP: 401x FABRICATED FROM TYPE 6063-T6 ALUMINUM EXTRUSIONS SHOP PUNCHED AND SHOP FACED WITH TYPE 6U THERMAL BREAK AT SUBGIRT AND TYPE 6T THERMAL BREAK AT STUD SIDE
  - FASTENING PATTERN BASED ON DESIGN LOADS SHALL BE AS SHOWN ON ELEVATION
- K. PORCELAIN TILE: 10mm THK. PORCELAIN TILE
  - 762x1524mm STOCK SIZE (FOR 10mm THK. PORCELAIN)
- L. FASTENERS: 4C 14 x25mm TEKS/3 HEX WASHERHEAD SELF-DRILLING (CLIMASEAL FINISH)
  - 4D TYPE 305 STAINLESS STEEL DOMED HEAD RIVETS WITH SEALED MANDRELS (PLAIN)
  - 4E 6.35 [1/4"]φ x 51mm [2"] LONG TAPCON LAGS (CLIMASEAL FINISH)
  - 4F E.A.I. AISI 316 STAINLESS STEEL RIVETS (15.0φ LARGE FLANGE, 5.0φ x18mm GRIP) WITH POWDER-COATED HEAD TO MATCH PANEL
    - SEPARATE STAINLESS STEEL FILLER CYLINDER (9.4φ x2.2mmφ x5.7mm LONG) FOR USE WITH RIVETS AT FIXED POINTS ONLY (SEE 'TYP HORIZ PANEL ELEV' NOTES)
  - 4G THROUGH SHEATHING 14 x 51mm TEKS/3 HEX WASHERHEAD SELF-DRILLING (CLIMASEAL FINISH)
  - 4H SET-SCREW #10-24 x19mm HWH SELF-THREADING (CLIMASEAL FINISH)
  - 4J KEIL ANCHOR M8 x25 A2 HEXHEAD & BUTTON SOCKET CAP SCREW
  - 4K ONE COMPONENT HYBRID POLYMER BONDING ADHESIVE 'DYNAMIC BOND' BY DYNAMIC BONDING SYSTEM (BLACK) 310ml CARTRIDGE APPLIED AT 7.5m PER CARTRIDGE TO GIVE A 10x10 NOMINAL TRIANGULAR ERECTION BEAD (12x3mm RECTANGULAR BEAD WHEN FORMED)
- M. OTHER: 6A BAKOR 230-21 INSULATION MASTIC ADHESIVE
  - 6B SRP 50mm WIDE (x 15m ROLL) BLACK SEAL TAPE FOR WEATHER BARRIER LAPS
  - 6C TREMCO 'TREMISIL 600' BLACK SILICONE GASKET ADHESIVE
    - APPLY 3φ SERPENTINE PATTERN AT 10m [30"] PER 310ml CARTRIDGE TO HATBARS
    - PANEL ERECTION SUPPORT & BEAD-DEPTH BLACK FOAM TAPE 'DYNAMIC TAPE' BY DYNAMIC BONDING SYSTEMS 25m PER ROLL, TAPE SIZE 12x3 SELF-ADHESIVE BOTH SIDES WITH STRIPABLE FILM
  - 6D PANEL BONDING SURFACE CLEANER 'DYNAMIC CLEAN' BY DYNAMIC BONDING SYSTEMS. APPLY CLEANER TO SURFACE PREPARATION STRIPS AT A RATE OF 1500ml [4900"] PER 5 LITER CAN
  - 6E 2 COMPONENT PANEL BONDING SURFACE IMPROVER 'DSIE' DYNAMIC SURFACE IMPROVER EPOXY BY DYNAMIC BONDING SYSTEM, APPLY TO SURFACE PREPARATION STRIPS AT A RATE OF 100m [325"] PER MIXED CAN
  - 6F 'TUESULOK' HIGH PERFORMANCE SILICA AEROGEL INSULATION PAD BY ACOUSTIBLOK 10x40x100 PAD R=10.3/m (R.ppd at 10% ERECTED COMPRESSION =10.3x0.354=3.6) SHOP INSTALLED WITH SELF-ADHESIVE BACKER
  - 6G '1659X' FIRM HIGH-TENSILE CORK-NEOPRENE TAPE BY JACOBS & THOMPSON 1.6 [1/16"] x40x65 PAD, R.approximate =2.4/in <for 50 cork (R.pd=0.15) SHOP INSTALLED WITH SELF-ADHESIVE BACKER



**NOTE:**  
**SOFFIT APPLICATION ONLY**  
 - KEIL ANCHOR TO BE INSTALLED AND FASTENED BEHIND PORCELAIN TILE PANEL  
 - VERTICAL AND HORIZONTAL SPACING IS 400mm MAX UNLESS NOTED



0	NOV-04-2013	FOR REFERENCE ONLY	ADG
No.	DATE	REVISION	BY
STAMP			
<b>FOR REFERENCE</b> DATE: NOV-04-2013			
<b>ENGINEERED ASSEMBLIES</b>			
75-6535 MILLCREEK DR. MISSISSAUGA ONTARIO L5N 2M2 CANADA TEL: (905) 816-2218 FAX: (905) 816-9761 engineeredassemblies.com			
ENGINEER STAMP			
PROJECT			
LOCATION			
CUSTOMER			
DESIGNER			
DRAWING TITLE PORCELAIN R.V.R.S. 'HIDDEN FASTENER' SYSTEM			
BY ADG	CHECKED BY		
DATE NOV 2013	PROJECT #		
SCALE NTS	SHEET		SD1
THIS DRAWING IS THE PROPERTY OF ENGINEERED ASSEMBLIES IT MAY NOT BE REPRODUCED WITHOUT OUR CONSENT.			